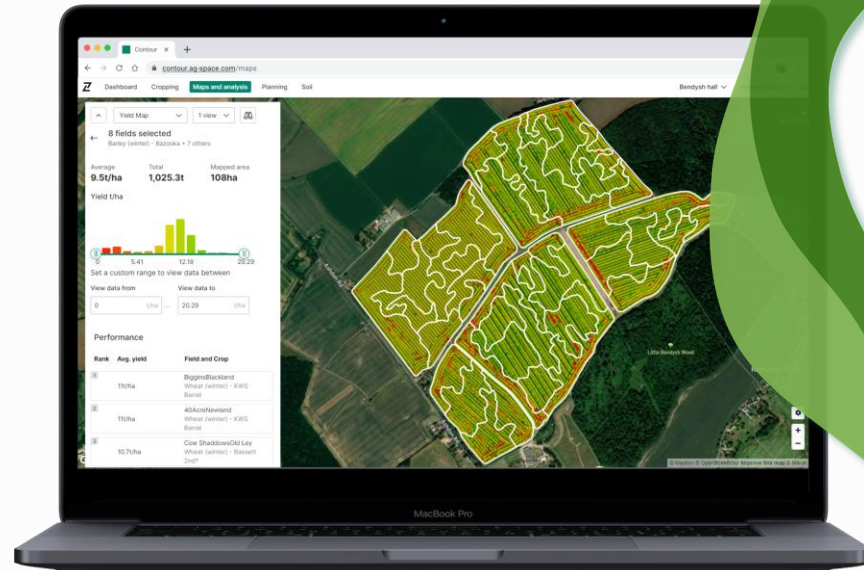


# Yield Maps

Contour User Guide

August 2022



OriginDIGITAL

RHIZA

# Contents

01

Uploading Yield Maps

02

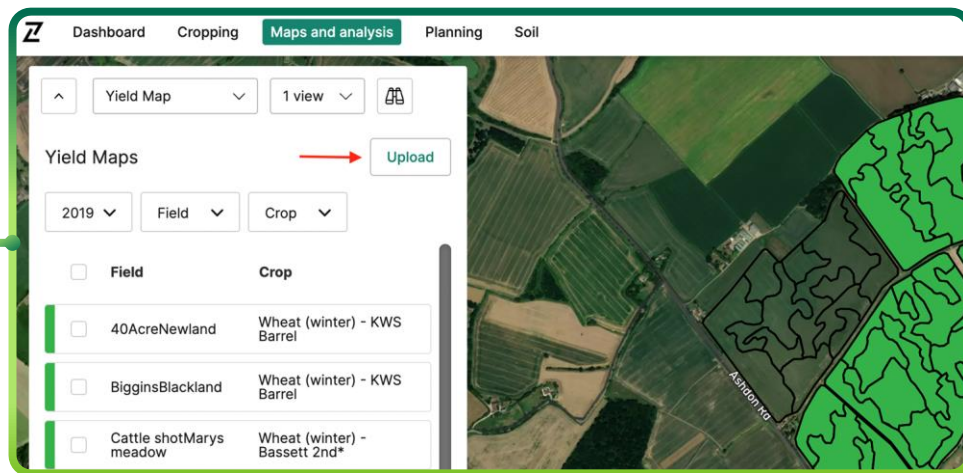
Field Analysis

03

Supported file formats

# Uploading Yield Maps

# Select 'Upload' button in Yield Map panel of Maps and Analysis



To upload yield maps into Contour, click 'Select imagery' > 'Yield Map' in Maps and Analysis and then select the upload button.

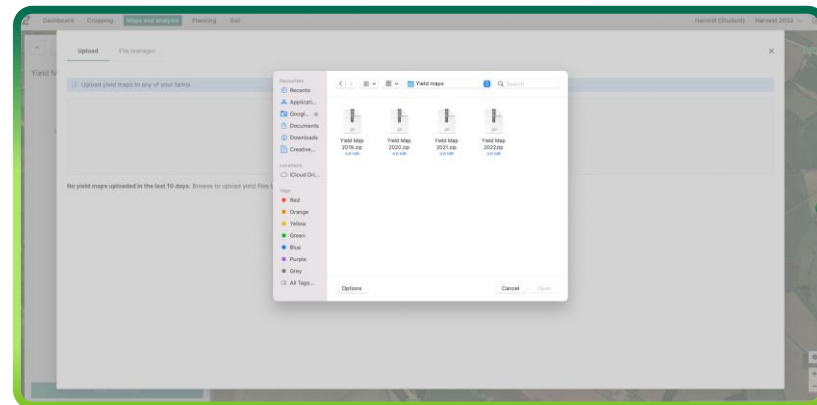
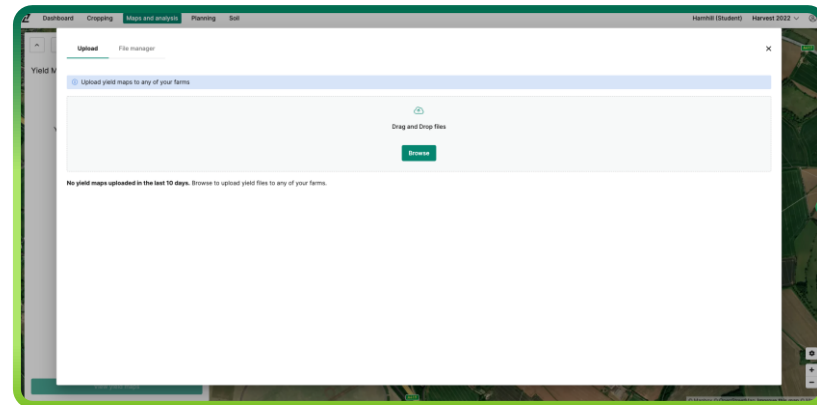
NOTE: This is also how to access the file manager tab and see the status of previous uploads.

# Upload tab - Browse for files to upload

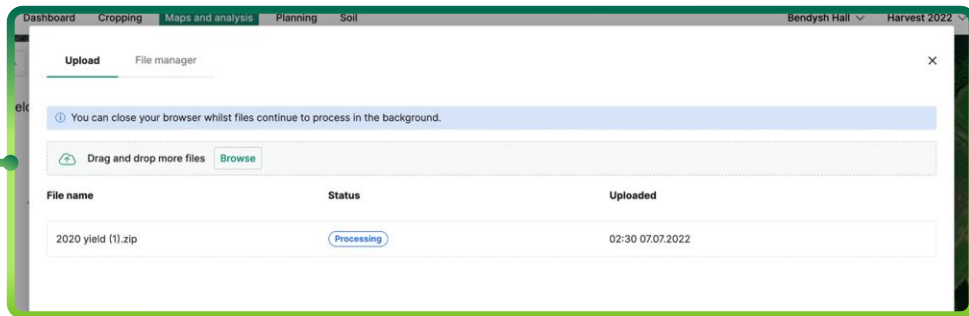
The upload tab is where you add new files to the system.

Browse your computer to select your yield map files, then click 'Open'.

**NOTE: Files should be contained in a zipped folder for upload.**



# Upload tab - Processing uploads



**Each file shows its status while it is uploading and then processing.**

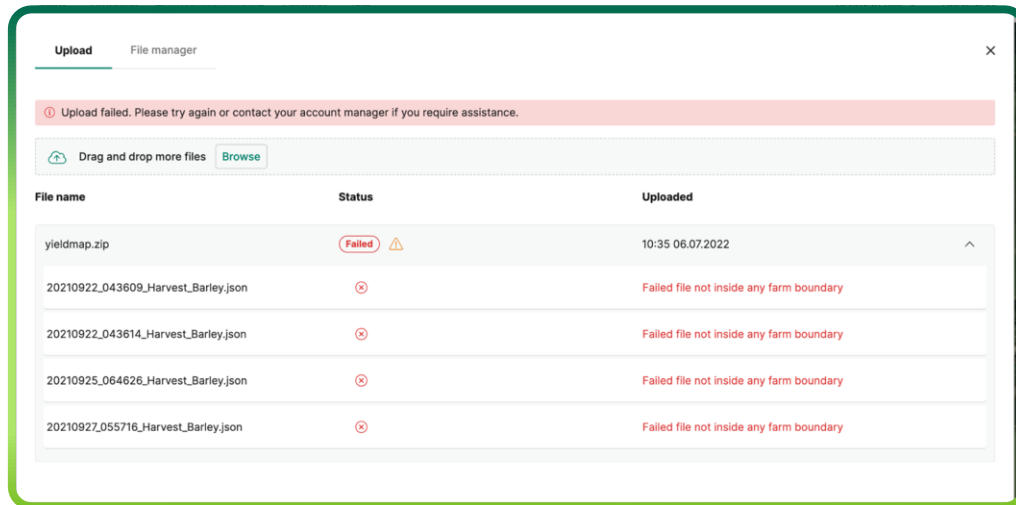
Once each file has processed successfully it is moved to file manager automatically.

NOTE: Once status has changed to 'Processing', users can safely navigate away from the page and come back later to check progress. Large files can take up to an hour to process.

# Upload tab - Failed uploads

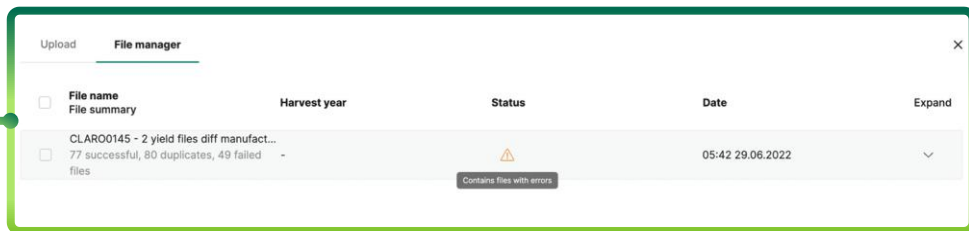
**Upload processing can fail if files are invalid, incompatible, corrupted or a duplicate of others on the system.**


Failed uploads will be visible in the upload tab for 10 days so the reason for failure can be examined. After 10 days the failed uploads are removed from view.



# File manager tab - View successfully processed uploads

**Files that have processed successfully are visible in file manager.**



<input type="checkbox"/>	File name File summary	Harvest year	Status	Date	Expand
<input type="checkbox"/>	CLARO0145 - 2 yield files diff manufact... 77 successful, 80 duplicates, 49 failed files	-	 Contains files with errors	05:42 29.06.2022	▼

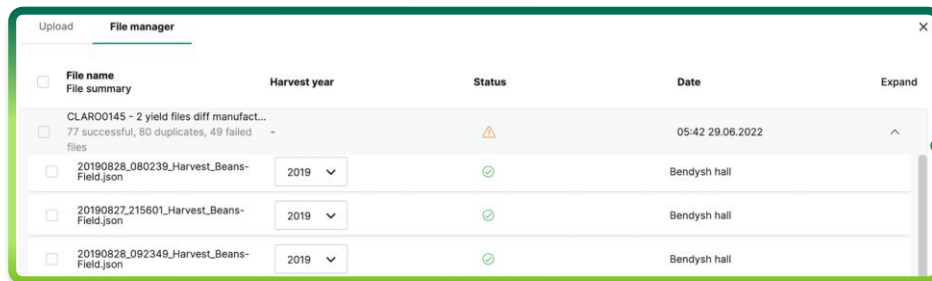
The overview of each upload shows the overall upload 'file name' (i.e. the name of the uploaded .zip folder), overall processing status, date of upload, a button to expand and examine the individual yield map files in the upload, and a breakdown of each individual yield map's status.



# File manager tab - View individual yield maps within processed uploads

**Contour automatically detects the correct field and harvest year for each individual yield map in an upload.**






Expanding the overview of an upload in file manager shows the name, harvest year (which can be modified), status, and farm for each individual yield map in that upload.



The screenshot shows a web interface with two tabs: 'Upload' and 'File manager'. The 'File manager' tab is active, displaying a table with columns: File name, Harvest year, Status, Date, and Expand. The first row is a summary for upload 'CLARO0145 - 2 yield files diff manufact...' showing 77 successful, 80 duplicates, and 49 failed files. Below this are three rows of individual yield maps, each with a checkbox, file name, a dropdown for the harvest year (all set to 2019), a status icon (green checkmark), and the farm name 'Bendysh hall'.

<input type="checkbox"/>	File name	Harvest year	Status	Date	Expand
<input type="checkbox"/>	File summary				
<input type="checkbox"/>	CLARO0145 - 2 yield files diff manufact... 77 successful, 80 duplicates, 49 failed files	-	⚠	05:42 29.06.2022	^
<input type="checkbox"/>	20190828_080239_Harvest_Beans-Field.json	2019 ▼	✓	Bendysh hall	
<input type="checkbox"/>	20190827_215601_Harvest_Beans-Field.json	2019 ▼	✓	Bendysh hall	
<input type="checkbox"/>	20190828_092349_Harvest_Beans-Field.json	2019 ▼	✓	Bendysh hall	

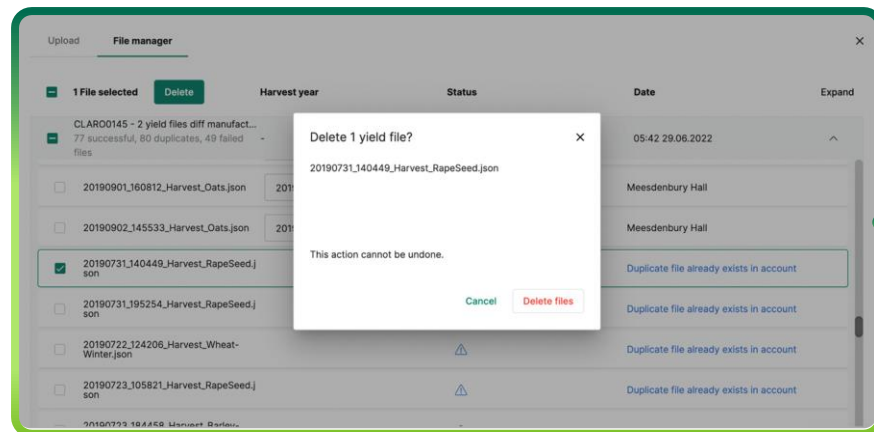
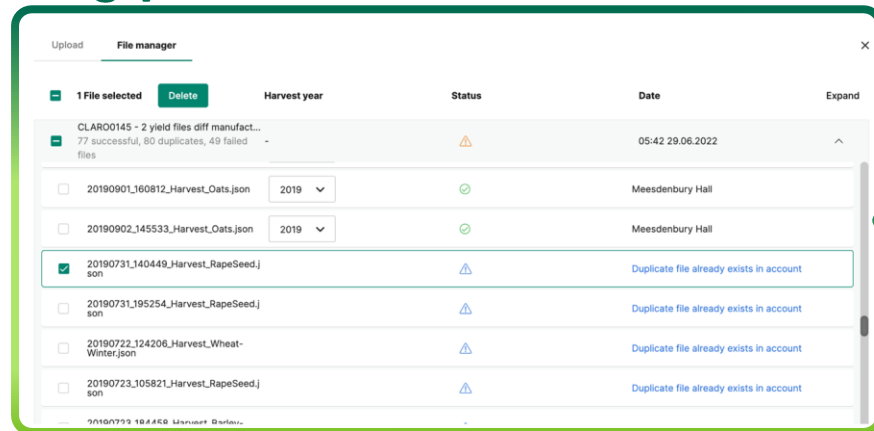
# File manager tab - Status of individual yield maps

CLARO0145 - 2 yield files diff manufact... 77 successful, 80 duplicates, 49 failed files		05:42 29.06.2022	
<input type="checkbox"/>	20190729_171246_Harvest_Olseed.json 2019		Little Biggens
All yield files successfully uploaded			
CLARO0145 - 2 yield files diff manufact... 77 successful, 80 duplicates, 49 failed files		05:42 29.06.2022	
<input type="checkbox"/>	20190722_124213_Harvest_Barley-Winter.json		Duplicate file already exists in account
<input type="checkbox"/>	20190723_105826_Harvest_Barley-		Duplicate file already exists in account
CLARO0145 - 2 yield files diff manufact... 77 successful, 80 duplicates, 49 failed files		05:42 29.06.2022	
<input type="checkbox"/>	20190823_100844_Harvest_Wheat-Winter.json		Failed file not inside any farm boundary
<input type="checkbox"/>	20190826_142803_Harvest_Wheat.json		Failed due to insufficient data

Individual yield maps will show as successfully uploaded, rejected as a duplicate, or failed for a reason given in their status.

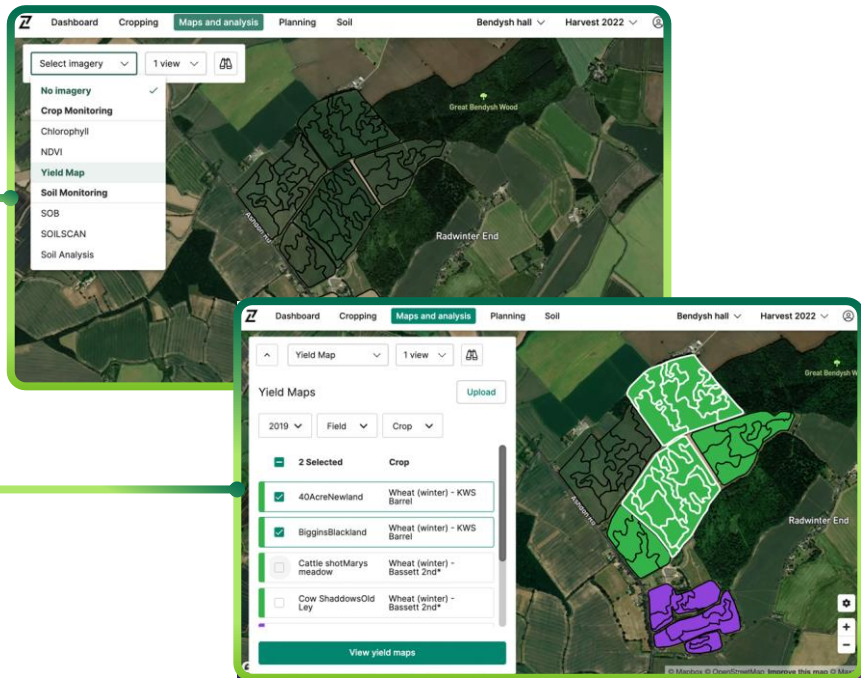
# File manager tab - Delete successfully processed files

Whole uploads and/or individual yield maps can be deleted by selecting them with the checkbox on the left side of the file manager and clicking the delete button. Users are prompted to confirm, since deletion cannot be undone.



# Field Analysis

# Navigate to yield maps in Maps & Analysis

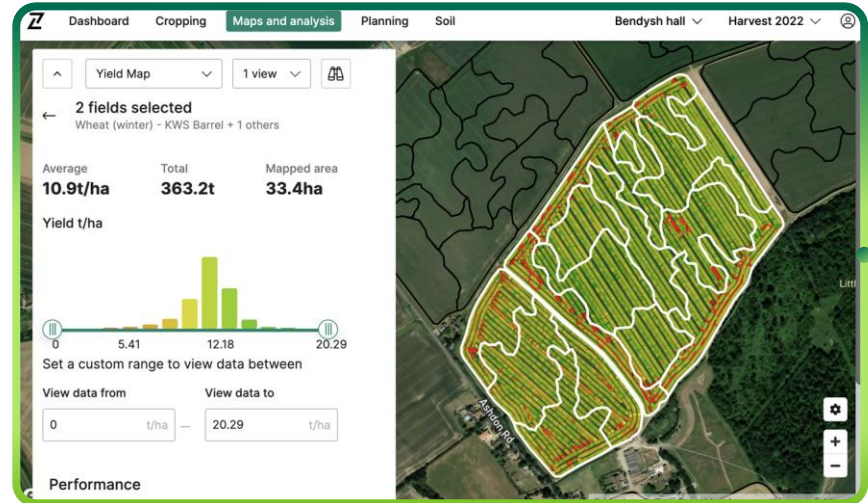


**Select yield maps in Maps & Analysis, then select fields of interest and click 'View yield maps'.**

This will load yield maps from the selected harvest year for the fields selected.

# View yield maps

Average yield, total yield, mapped area and yield distribution for selected fields are shown in the left-hand panel, with a map displayed on the right. This offers a quick, top line overview of performance for the area selected.



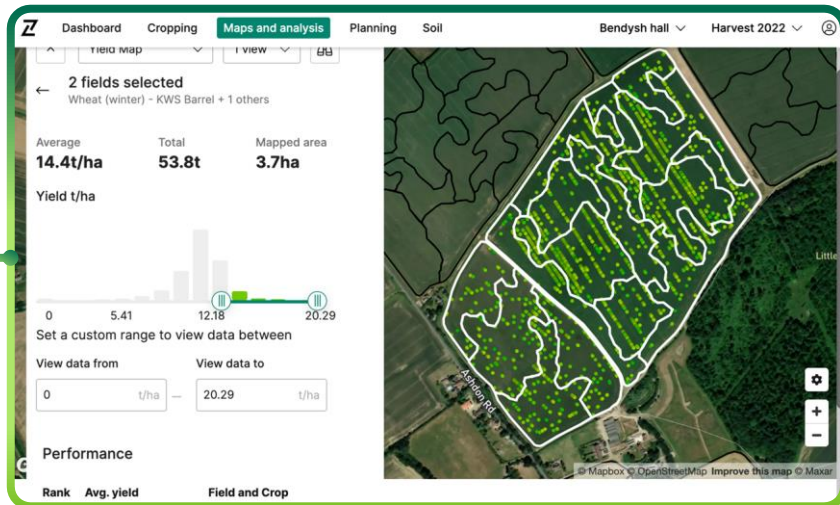
# View data only within a custom range

**Setting a custom range tells Contour to ignore data outside the selected limits, meaning yield distribution and colour scale are re-calculated for the remaining data.**

Users can then examine variations within a smaller range in greater detail, and/or remove outliers and skews in the data. Use the input boxes to set upper and lower limits. Users can reset the range with the button below the set range controls.



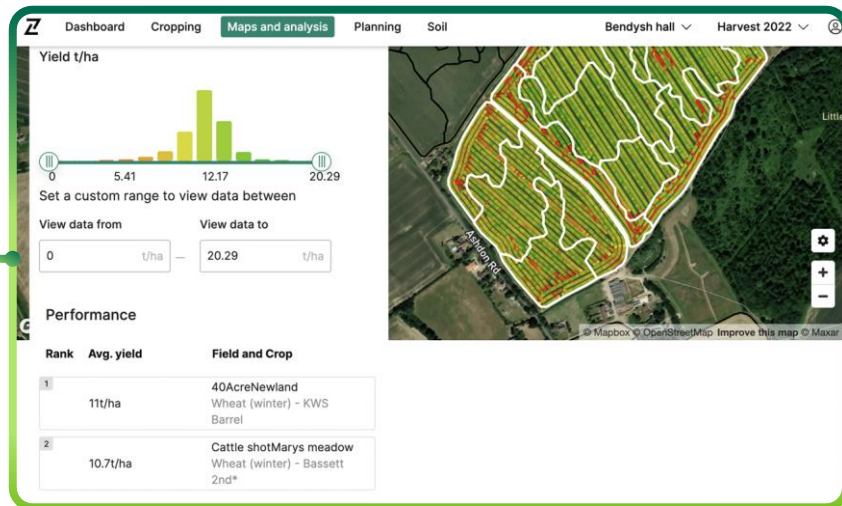
# View specific parts of the data but maintain colour scale



Users can focus on certain parts of the data they are viewing (e.g. high-yielding areas only), while preserving the colour scale used in the full data range by moving the sliders on the distribution histogram. Use this to focus on areas of interest by removing datapoints that aren't relevant.



# Selected fields are ranked by yield



The yield and crop in each field is listed in a table below the range controls.

This lets users identify their best performing fields at a glance.

# Supported file formats

# Supported file formats

Brand	Format name	Yield	File Extensions	File upload help descriptions
AGCO	FieldStar II	✓	TaskData.XML, TLG#####.bin, TLG#####.xml	This is a multi-file ISO11783 compliant format. You must upload a zip file which contains the TaskData.XML file as well as all of the TLG#####.BIN and TLG#####.XML files from the same directory.
AgLeader	YM2000	✓	*.YLD	This is a single-file format. You may upload an individual YLD file or a zip file containing multiple YLD files.
AgLeader	PF3000 / PF Advantage	✓	*.PFL	This is a single-file format. You may upload an individual PFL file or a zip file containing multiple PFL files.
AgLeader	Insight	✓	*.ILF	This is a single-file format. You may upload an individual ILF file or a zip file containing multiple ILF files.
AgLeader	Integra	✓	*.AGDATA or *.AGSETUP	This is a single-file format. You may upload an individual AGDATA/AGSETUP file or a zip file containing multiple AGDATA/AGSETUP files.
AgLeader	Compass	✓	*.AGDATA or *.AGSETUP	This is a single-file format. You may upload an individual AGDATA/AGSETUP file or a zip file containing multiple AGDATA/AGSETUP files.
AgLeader	InCommand	✓	*.AGDATA or *.AGSETUP	This is a single-file format. You may upload an individual AGDATA/AGSETUP file or a zip file containing multiple AGDATA/AGSETUP files.
AgLeader	SMS Advanced export	✓	*.TXT	This is a single-file format. You may upload an individual TXT file or a zip file containing multiple TXT files.
AgLeader	SMS Basic export	✓	*.TXT	This is a single-file format. You may upload an individual TXT file or a zip file containing multiple TXT files.
AgLeader	SMS Shape Export	✓	*.SHP, *.SHX, *.DBF	This is a shape file format. You must upload a zip file which contains the SHP, SHX, and DBF files which make up the shapefile. You may include multiple shapefiles in the same zip as long as all of the companion SHP, SHX, and DBF files are present.
Case IH / New Holland	Voyager 1	✓	*.HLL, *.FLS	This is a multi-file format. You must upload a zip which contains one or more HLL files as well as any FLS files from the same directory. Since the folder structure is very complex it is recommended that you zip and send your entire *.CNH directory.
Case IH / New Holland	Voyager 2	✓	*.TLH, *.TLO, *.TSH, *.TSO, *.TLC, *.TLA, *.T**	This is a multi-file format which uses a set of TLH, TSH, TLC, TSC, TLA, TSA, TLO, TSG, and TSO files. Since the folder structure is very complex <b>it is recommended that you zip and send your entire *.CN1 directory.</b>
CLAAS	CEBIS/Lexion	✓	*.AFT	This is a single-file format. You may upload an individual .aft file or a zip file containing multiple .aft files.
CLAAS	CEBIS 2/Jaguar	✓	TaskData.XML, TLG#####.bin, TLG#####.xml	This is a multi-file ISO11783 compliant format. You must upload a zip file which contains the TaskData.XML file as well as all of the TLG#####.BIN and TLG#####.XML files from the same directory.
Deere	Original GreenStar	✓	*.GSY, *.GSD	This is a single-file format and depending on your monitor setup you may have either GSD or GSY files. You may upload an individual GSD or GSY file or a zip file containing multiple GSD and GSY files.
Deere	GreenStar 2 (2600)	✓	*.FDD, *.FDL	This is a multi-file format which uses pairs of FDD and FDL files. You must upload a zip file which contains one or more pairs of FDD and FDL files. If either file is missing from the pair then the file will not be processed. These files can be found in the RCD directory of your GS2 card.

# Supported file formats

Brand	Format name	Yield	File Extensions	File upload help descriptions
Deere	GreenStar 3 (2630)	✓	*.FDD, *.FDL	This is a multi-file format which uses pairs of FDD and FDL files. You must upload a zip file which contains one or more pairs of FDD and FDL files. If either file is missing from the pair then the file will not be processed. These files can be found under the GS3_2630/<Profile>/RCD/EIC/Documentation directory of your GS3 card. It is recommended that you zip and send the entire Documentation directory for simplicity.
Deere	GreenStar 4 (4600)	✓	*.JDL	This is a single-file format. You may upload an individual *.jdl files or a zip file containing multiple *.jdl files.
Deere	APEX Shape Export	✓	*.SHP, *.SHX, *.DBF	This is a shape file format. You must upload a zip file which contains the SHP, SHX, and DBF files which make up the shapefile. You may include multiple shapefiles in the same zip as long as all of the companion SHP, SHX, and DBF files are present.
Loup	8000i Yield	✓	*.X##	This is a single file format. Loup yield files are named with a numeric date and an extension that begins with ".X". Example: 20140925.X05. You may upload an individual .X## file or a zip file containing multiple .X## files.
Loup	Loup Elite	✓	*.LoupElite	This is a single-file format. You may upload an individual .LoupElite file or a zip file containing multiple .LoupElite files.
Mapshots	AgStudio export	✓	*.SHP, *.SHX, *.DBF, *.MCD	This is a shape file format. You must upload a zip file which contains the SHP, SHX, DBF, and MCD files which make up the shapefile. You may include multiple shapefiles in the same zip as long as all of the companion SHP, SHX, DBF, and MCD files are present.
Precision	Precision 20/20 .dat	✓	harvest_*.dat, field_map_*.dat, liquid_map_*.dat	This is a single-file format but planting operations are usually a zip file containing all of the *.DAT files. Precision 20/20 planting file names start with "field_map" Example: field_map_2012_03_12_000.dat. Precision 20/20 yield file names start with "harvest" Example: harvest_1_Corn_2013_09_17_000.dat.
Precision	Precision 20/20 .2020	✓	*.2020	This is a single-file format. You may upload an individual *.2020 files or a zip file containing multiple *.2020 files.
Raven	ADV	✓	*.adv, *.adv.zip	This is a single-file format. You may upload an individual *.adv files or a zip file containing multiple *.adv files.
Raven	RAD file	✓	*.jdf, *.jdp, *.jdp.zip	This is a single-file format. You may upload an individual *.JDP.ZIP files or a zip file containing multiple *.JDP.ZIP files.
Raven	Slingshot export	✓	*.SHP, *.SHX, *.DBF	This is a shape file format. You must upload a zip file which contains the SHP, SHX, and DBF files which make up the shapefile. You may include multiple shapefiles in the same zip as long as all of the companion SHP, SHX, and DBF files are present.
Topcon	Topcon X30	✓	*.CSV, *.INI	This is a multiple-file format. We suggest zipping the entire folder structure for best results.
Trimble	FMX (Shapefile)	✓	*.SHP, *.SHX, *.DBF	This is a shape file format. You must upload a zip file which contains the Coverage.SHP, Coverage.SHX, and Coverage. DBF files which make up the shapefile. You may include multiple shapefiles in the same zip as long as all of the companion SHP, SHX, and DBF files are present.
Trimble	FMX (ISOXML)	✓	TaskData.XML, TLG#####.bin, TLG#####.xml	This is a multi-file ISO11783 compliant format. You must upload a zip file which contains the TaskData.XML file as well as all of the TLG#####.BIN and TLG#####.XML files from the same directory.
Trimble	FMD	✓	*.SHP, *.SHX, *.DBF	This is a shape file format. You must upload a zip file which contains the Coverage.SHP, Coverage.SHX, and Coverage. DBF files which make up the shapefile. You may include multiple shapefiles in the same zip as long as all of the companion SHP, SHX, and DBF files are present.

# Yield Maps

Contour User Guide July 2022



OriginDIGITAL

---

**RHIZA**